

Operation and Maintenance Manual

4.2.3

**SWN-P, SWN- P+, EX-P-HT4, EX-P-
STD, EX-P-STD2, SWN-P-HT2, SWN-
P-HT2+**



DECLARATION OF CONFORMITY

Tested to IM) MEPC 178(58) Part 3; LabTest Certification Inc. as per the requirements of USCG Federal Register 46 CFR part 162, subpart 162.060-30 and the DNV GL class guideline DNVGL-CG-0339 (November 2016), which incorporates the requirements of IACS UR E10.

Manufacturer's Name: Halogen Systems, Inc.

Manufacturer's Address: 919 Incline Way, Ste. 11, Incline Village, Nevada 89451

Type of Equipment: TRO Sensor

Model No: SWN-P-HT2+, SWN-P+, EX-P-HT4, EX-P-STD, EX-P-STD2

I, the undersigned, hereby declare that the equipment specified above conforms to the above Directive and Standard.

Place: Incline Village, Nevada USA



(Signature)

Date: May 5, 2021

Michael Silveri, President

Critical Safety Information

NOTICE

The manufacturer is not responsible for any damages due to misapplication or misuse of this product including, without limitation, direct, incidental and consequential damages, and disclaims such damages to the full extent permitted under applicable law. The user is solely responsible to identify critical application risks and install appropriate mechanisms to protect processes during a possible equipment malfunction.

Please read this entire manual before unpacking, setting up, or operating this equipment. Pay attention to all danger and caution statements. Failure to do so could result in serious injury to the operator or damage to the equipment.

Make sure that the protection provided by this equipment is not impaired. Do not use or install this equipment in any manner other than that specified in this manual.

Use of hazard information



DANGER

Indicates a potentially or imminently hazardous situation which, if not avoided, will result in death or serious injury



WARNING

Indicates a potentially or imminently hazardous situation which, if not avoided, could result in death or serious injury.



CAUTION

Indicates a potentially hazardous situation that may result in minor or moderate injury.

Contents

1	SPECIFICATIONS	4
2	START-UP AND OPERATION	5
3	MEANING OF INDICATORS	5
4	DISPLAY INTERFACE & KEY PAD OPERATION	6
5	CONFIGURATION	6
6	CALIBRATION	7
6.2	DILUTION PROCEDURE (SYSTEMS THAT USE MORE THAN 10 PPM TRO FOR BALLASTING)	11
7	CALIBRATE CHLORINE ZERO (USUALLY UNNECESSARY)	11
8	TROUBLESHOOTING	12
8.1	LEVEL ONE PROBLEM CODES AND ALARMS	12
8.2	LEVEL THREE ALARM CODES OUTSIDE MEASUREMENT RANGE	13
8.3	PH RELATED ERROR CODES (IF PH IS PRESENT SWN-PH-HT2)	13
8.4	LEVEL TWO PROBLEM CODES	14
8.5	DIAGNOSTICS	14
9	OUTPUT CONFIGURATION OPTIONS	15
9.1	TWO OUTPUT CONFIGURATION	15
9.2	4 OUTPUT CONFIGURATION	15
10	CHANGE MEASUREMENT OPTIONS	18
11	CHECKING THE LOG FILE	19
12	RESTORE DEFAULT CALIBRATIONS	20
13	CHANGING MODBUS OPTIONS	20
14	ADDITIONAL COMMANDS	21
14.1	LONG MENU	21
14.2	CALIBRATION KEY CODE	22
14.3	STOP FUNCTION	23
15	MANDATORY MAINTENANCE BY USER FOR SWN-P-HT2	23
16	MAINTENANCE COMPONENTS FOR THE SWN-P-HT2	24
17	BIANNUAL MAINTENANCE (SWN-P+/SWN-P-HT2+)	25
18	ANNUAL PH CALIBRATION CHECK	25
19	BIANNUAL REPLACEMENT OF WEAR PARTS ALL EXCEPT EX-P-HT4	26
20	BIANNUAL PH SENSOR REPLACEMENT SWN-P-HT2+ AND SWN-P+	29
21	BIANNUAL CALIBRATE CONDUCTIVITY	29
22	LIMITED WARRANTY	31
23	REVISION HISTORY	32

1 SPECIFICATIONS

Sensor housing: Stainless Steel 316

Chlorine Accuracy: $\pm 15\%$ or 0.06 ppm, whichever is greater Limit of Detection: 0.03 ppm

Conductivity Range: 500 μS to 60,000 μS

Chlorine range: 0 to 20.0 ppm as Cl_2 .

Response time: 112 Seconds

Process connection: **SWN-P+** To be fitted in a 2-in NPT FIP Pipe Fitting (Tee)

Wetted parts:

PVDF, PEEK, Stainless Steel 316

Weight/shipping weight:

Model SWN-P, SWN-P(+)-HT2(+): 1.5 kg

Model EX-P-HT4: 2.5 kg.

(Rounded to the nearest 0.5 kg)

Sample requirements:

Pressure: 0 to 10 Bar

Temperature: 0 (non-freezing) to 40° C

Minimum velocity: N/A

Maximum velocity: 5 m/s

Sample Salinity: 0.2 to 38 PSU at 0 to 40°C

pH: 6.5 to 9.0 (8.5 EX Models)

2 START-UP AND OPERATION

The start-up screen will appear after the first cycle (Figure 2). The display will take one minute to update. The system calibration should be checked at start and commissioning. If air is detected the sensor pump will cycle on and off three times to remove air from the sensor and may delay the first cycle completion by up to 20 seconds.

Main Screen												
C H L	--	--	--	--	--			n A	--	--	--	--
4 - 2 0 N o n e S e a r c h i n g												

Indicates number for 4-20 mA Outputs are present

Figure 1: Start up screen shows the number of 4-20 mA Outputs (4) detected

Main Screen												
C H L	-	-	-					n A	-	-	-	-
p H	-	-	-									
O R P	-	-	-					P S U	-	-	-	
A D D R	1	2	5									

Sensor Modbus address

Figure 2: Main Screen: normal display after startup and signal found.

Main Screen												
C H L	0.	1	7					n A	1	7	7	
p H	7.	4	0									
O R P	8	0	3					P S U	3	2		
T e m p	1	8						E O C				

nA = Sensor Current which is the signal strength and a useful troubleshooting tool

Figure 3: Display after start-up and complete sensor cycle of operation. Note the End of Cycle Indicator (EOC).

Figure 3 shows the “EOC” indicator on the LCD screen. This indicates the sensor is finished its measurement cycle and all measurements are updated on the screen. It will display this indicator for 1 second.

3 MEANING OF INDICATORS

- CHL:** This is the level in ppm. The range is 0 to 20 ppm. The raw signal is in nanoamps of current and is proportional to the TRO level.
- ORP:** ORP is short for Oxidation Reduction Potential. This is another parameter that indicates the effectiveness of the TRO in killing organisms. Raw untreated seawater has an ORP of 180 to 280. This is used for diagnostics and can indicate the condition of the TRO electrode. It has a logarithmic relationship to TRO and is used for a qualitative comparison only. The reading is a voltage in millivolts.
- PSU (Salinity):** This is derived from the measurement of the electrical conductivity of the water.
- CND** Conductivity can be selected instead of the PSU to be displayed on the screen. (See Figure).

T: This indicates the temperature in degrees C or F. It will also display below zero values.

4 DISPLAY INTERFACE & KEY PAD OPERATION



Figure 4: Display & Buttons

Key	Function Description
MENU	Displays the Menu Tree
SELECT	Accepts the value
→	Move Cursor Right
←	Move Cursor down
↑	Increment a digit or move cursor up
↓	Decrement a digit or mover cursor down
>	Cursor used to select items in a list
—	Cursor for digits- indicates digit that will be edited.
BACK	Moves one level back in Menu

5 CONFIGURATION

Press the **MENU** button and from the *Menu Screen* (Figure 5) select “Configuration”. From the *Configuration Screen* (Figure 6) select “4 – 20 mA range.” Use this screen to assign a full-scale chlorine concentration to the **20 mA** output. Use the **ARROW** buttons to change the maximum chlorine to the desired value. Press **SELECT** to store the setting. Edit the other settings as necessary in a similar manner.

Chlorine is on 4-20 mA Output 1

Output is set to PSU by default. To change this, see Section 9 Output Configuration Options

Note: Standard Display units (D01) have two 4-20 mA outputs. D01A has 4 outputs (see Figure 7).

C	O	N	F	I	G	U	R	A	T	I	O	N						
>	C	A	L	I	B	R	A	T	E									
	D	I	A	G	N	O	S	T	I	C	S							

Figure 5: Menu Screen

	M	e	a	u	r	e	m	e	n	t		O	p	t	i	o	n	s
>	4	-	2	0	M	A		O	p	t	i	o	n	s				
	M	o	d	b	u	s												

Figure 6: Configuration Screen

>	S	E	T		4	-	2	0	M	A		R	A	N	G	E		
	S	e	l	e	c	t		O	u	t	2		T	y	p	e		
	S	e	t		4	-	2	0	M	A		O	f	f	s	e	t	
	D	i	s	p		T	e	m	p		F					N	O	

Figure 7: Set 4 - 20 mA

Set 4-20 mA 4 Channel Range																			
	4	-	2	0		M	A		C	H	L					1	0	.	0
	4	-	2	0		M	A		P	S	U					5	0	.	0
>	4	-	2	0		M	A		T	E	M	P				4	0	.	0
	4	-	2	0		M	A		P	H						7	.	0	

6 CALIBRATION

We recommend the use of the Hach Pocket Colorimeter.

<https://www.hach.com/product.detail-overview.jsa?seoTerm=dr300-pocket-colorimeter-chlorine-free-total-with-box&id=55321383862>

- See Procedure for high range <https://www.hach.com/asset-get.download.jsa?id=31948984050>
- See Procedure for low range <https://www.hach.com/asset-get.download.jsa?id=31948984021>

We recommend that calibration be checked as follows:

- (1) Check calibration at least every six months.
- (2) If the value deviates by more than 20% then sensor recalibrate.
- (3) Calibration can be checked using a Colorimeter.
- (4) Calibration is usually not required for 12 months or more.

Low Level Calibration-

There are two Calibration Levels: Low and High. Both are independently set. The first step is to calibrate the high level. If the low level is not accurate then it can be calibrated separately.

1. The high-level chlorine level for calibration must be between 1 and 20 ppm.
2. The low-level chlorine level must be between 0.2 and 0.7 ppm.

3. If you perform the low range calibration you should perform a zero chlorine calibration before performing the low range calibration.

The Sensor will automatically select the low calibration if the known levels are within the range listed in 2 (above). It will select the high range calibration if the levels match those listed in 1 (above). The steps below are for the high range calibration. To calibrate the low range, repeat the steps for the low range.

To check calibration, follow the steps below:

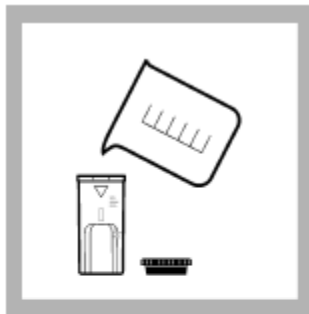
Note: for convenience, steps for the high range measurement are listed here. Complete procedure is available using the links above under Calibration.

Prepare DPD blank

To calibrate chlorine sensor to known chlorine level: **Prepare the instrument with a zero (blank value).**



1. Set the instrument to high range (HR).
For DR300, push the up arrow button. For PCII, push the menu button, checkmark button, then the menu button again.



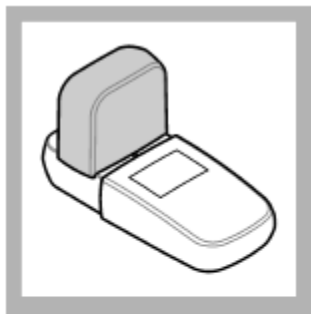
2. **Prepare the blank:** Rinse a 1-cm/10-mL sample cell and cap three times with sample. Fill the sample cell to the 5-mL mark with sample. Close the sample cell.



3. Clean the blank sample cell.



4. Insert the blank into the cell holder. Point the triangle mark on the sample cell away from the keypad.



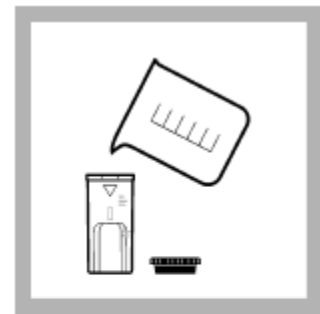
5. Install the instrument cap over the cell holder.



6. Push **ZERO**. The display shows "0.0".



7. Remove the sample cell from the cell holder.



8. **Prepare the sample:** Rinse a second 1-cm/10-mL sample cell and cap three times with sample. Fill the sample cell to the 5-mL mark with sample.

Start Calibration Cycle

If Chlorine levels are generally stable during ballasting, use the Fast Calibration Method. If levels are changing rapidly, use the time delay calibration in the CALIBRATE menu function. The sequence differs slightly and will be described below.

The sensor should be calibrated in water with a chlorine level between 2 and 20 ppm and low levels between 0.2 and 0.7 ppm.

Fast Calibration

This method can be used by most BWMS systems that inject oxidant during ballasting.

Determine the chlorine level in Section **DPD Reading** (below)

Once you have obtained the reading, perform this sequence.

MENU | Calibration | Chlorine Menu | Fast CHL Cal

<p>Press Select. This will store the sensor value for up to 5 minutes until the DPD level is obtained.</p>	<table border="1"> <thead> <tr> <th colspan="10">CHL Menu</th> </tr> </thead> <tbody> <tr> <td>K</td><td>n</td><td>o</td><td>w</td><td>n</td><td>l</td><td>e</td><td>v</td><td>e</td><td>l</td> </tr> <tr> <td>C</td><td>H</td><td>L</td><td>Z</td><td>E</td><td>R</td><td>O</td><td></td><td>D</td><td>O</td><td>N</td><td>E</td> </tr> <tr> <td>></td><td>F</td><td>a</td><td>s</td><td>t</td><td>C</td><td>H</td><td>L</td><td>C</td><td>a</td><td>l</td> </tr> <tr> <td></td><td>R</td><td>e</td><td>s</td><td>t</td><td>o</td><td>r</td><td>e</td><td>D</td><td>e</td><td>f</td><td>a</td><td>u</td><td>l</td><td>t</td><td>C</td><td>a</td><td>l</td> </tr> </tbody> </table>	CHL Menu										K	n	o	w	n	l	e	v	e	l	C	H	L	Z	E	R	O		D	O	N	E	>	F	a	s	t	C	H	L	C	a	l		R	e	s	t	o	r	e	D	e	f	a	u	l	t	C	a	l
CHL Menu																																																														
K	n	o	w	n	l	e	v	e	l																																																					
C	H	L	Z	E	R	O		D	O	N	E																																																			
>	F	a	s	t	C	H	L	C	a	l																																																				
	R	e	s	t	o	r	e	D	e	f	a	u	l	t	C	a	l																																													
<p>The cursor will appear below the first digit. Use the arrow keys to select and increment the digit to match the reading to the DPD value. Use the → button to select which digit to change to match DPD value and the ↑ ↓ buttons to change the value, and press SELECT to complete.</p>	<table border="1"> <tbody> <tr> <td>></td><td>A</td><td>d</td><td>j</td><td>u</td><td>s</td><td>t</td><td>C</td><td>H</td><td>L</td><td></td><td></td><td></td><td></td><td></td><td></td><td></td><td></td><td>6</td><td>.</td><td>5</td><td>5</td> </tr> </tbody> </table>	>	A	d	j	u	s	t	C	H	L									6	.	5	5																																							
>	A	d	j	u	s	t	C	H	L									6	.	5	5																																									

CALIBRATION (10 Minute Time Delay)

This method will store the internal signal value for chlorine in the Display for up to 10 minutes. This will allow time after pulling the water sample for the DPD reaction time (3 minutes). The stored signal value will be used for the calibration of the sensor. This is useful for a system using an in tank BWMS method.

<p>Navigate to the CHL Menu</p>	<p>Menu Calibration CHL Menu</p>																																																		
<p>Select Known Level.</p>	<table border="1"> <tbody> <tr> <td>></td><td>K</td><td>N</td><td>O</td><td>W</td><td>N</td><td>L</td><td>E</td><td>V</td><td>E</td><td>L</td> </tr> <tr> <td></td><td>C</td><td>H</td><td>L</td><td>Z</td><td>E</td><td>R</td><td>O</td><td></td><td>D</td><td>O</td><td>N</td><td>E</td> </tr> <tr> <td></td><td>F</td><td>a</td><td>s</td><td>t</td><td>C</td><td>a</td><td>l</td> </tr> <tr> <td></td><td>R</td><td>e</td><td>s</td><td>t</td><td>o</td><td>r</td><td>e</td><td>D</td><td>e</td><td>f</td><td>a</td><td>u</td><td>l</td><td>t</td><td>C</td><td>a</td><td>l</td> </tr> </tbody> </table>	>	K	N	O	W	N	L	E	V	E	L		C	H	L	Z	E	R	O		D	O	N	E		F	a	s	t	C	a	l		R	e	s	t	o	r	e	D	e	f	a	u	l	t	C	a	l
>	K	N	O	W	N	L	E	V	E	L																																									
	C	H	L	Z	E	R	O		D	O	N	E																																							
	F	a	s	t	C	a	l																																												
	R	e	s	t	o	r	e	D	e	f	a	u	l	t	C	a	l																																		
<p>When you have pulled the sample, select TAKE SAMPLE. This will start the 10-minute timer and store the signal value.</p>	<table border="1"> <tbody> <tr> <td>></td><td>T</td><td>A</td><td>K</td><td>E</td><td>S</td><td>A</td><td>M</td><td>P</td><td>L</td><td>E</td><td>1</td><td>0</td><td>M</td><td>I</td><td>N</td> </tr> <tr> <td></td><td>D</td><td>P</td><td>D</td><td>L</td><td>E</td><td>V</td><td>E</td><td>L</td><td></td><td></td><td>0</td><td>8</td><td>.</td><td>9</td><td>7</td> </tr> </tbody> </table>	>	T	A	K	E	S	A	M	P	L	E	1	0	M	I	N		D	P	D	L	E	V	E	L			0	8	.	9	7																		
>	T	A	K	E	S	A	M	P	L	E	1	0	M	I	N																																				
	D	P	D	L	E	V	E	L			0	8	.	9	7																																				
<p>Perform the DPD Reading in DPD Section after obtaining the value Select DPD LEVEL. The cursor will appear below the first digit. Use the arrow keys to select and increment the digit to match the reading to the DPD value.</p>	<table border="1"> <tbody> <tr> <td></td><td>T</td><td>i</td><td>m</td><td>e</td><td>9</td><td>.</td><td>3</td><td>M</td><td>I</td><td>N</td><td>R</td><td>e</td><td>m</td><td>a</td><td>i</td><td>n</td> </tr> <tr> <td>></td><td>D</td><td>P</td><td>D</td><td>L</td><td>E</td><td>V</td><td>E</td><td>L</td><td></td><td></td><td>0</td><td>8</td><td>.</td><td>9</td><td>7</td> </tr> <tr> <td></td><td>S</td><td>a</td><td>v</td><td>e</td><td>N</td><td>o</td><td>w</td> </tr> </tbody> </table>		T	i	m	e	9	.	3	M	I	N	R	e	m	a	i	n	>	D	P	D	L	E	V	E	L			0	8	.	9	7		S	a	v	e	N	o	w									
	T	i	m	e	9	.	3	M	I	N	R	e	m	a	i	n																																			
>	D	P	D	L	E	V	E	L			0	8	.	9	7																																				
	S	a	v	e	N	o	w																																												

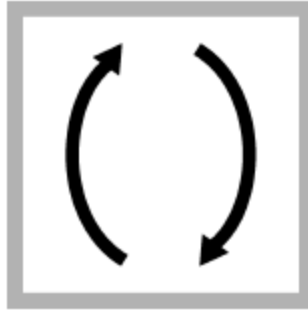
Use the → button to select which digit to change to match DPD value and the ↑ ↓ buttons to change the value, and press SELECT to complete.																																																																													
Move the cursor to Save Now and press SELECT . The following screen will appear.	<table border="1"> <tr><td>-</td><td>-</td><td>-</td><td>-</td><td>-</td><td>-</td><td>-</td><td>-</td><td>-</td><td>-</td><td>-</td><td>-</td><td>-</td><td>-</td><td>-</td><td>-</td></tr> <tr><td>N</td><td>O</td><td>T</td><td>E</td><td>:</td><td></td><td></td><td></td><td></td><td></td><td></td><td></td><td></td><td></td><td></td><td></td></tr> <tr><td>C</td><td>a</td><td>l</td><td>t</td><td>a</td><td>k</td><td>e</td><td>s</td><td></td><td>m</td><td>a</td><td>n</td><td>y</td><td></td><td>m</td><td>i</td><td>n</td><td>s</td></tr> <tr><td>-</td><td>-</td><td>-</td><td>-</td><td>-</td><td>-</td><td>-</td><td>-</td><td>-</td><td>-</td><td>-</td><td>-</td><td>-</td><td>-</td><td>-</td><td>-</td><td>-</td><td>-</td></tr> </table>	-	-	-	-	-	-	-	-	-	-	-	-	-	-	-	-	N	O	T	E	:												C	a	l	t	a	k	e	s		m	a	n	y		m	i	n	s	-	-	-	-	-	-	-	-	-	-	-	-	-	-	-	-	-	-								
-	-	-	-	-	-	-	-	-	-	-	-	-	-	-	-																																																														
N	O	T	E	:																																																																									
C	a	l	t	a	k	e	s		m	a	n	y		m	i	n	s																																																												
-	-	-	-	-	-	-	-	-	-	-	-	-	-	-	-	-	-																																																												
Once the calibration has been saved, the display will return to the main screen.	<table border="1"> <tr><td>C</td><td>H</td><td>L</td><td></td><td>8</td><td>.</td><td>9</td><td>7</td><td></td><td></td><td></td><td></td><td></td><td>n</td><td>A</td><td>9</td><td>1</td><td>5</td><td>6</td></tr> <tr><td>p</td><td>H</td><td></td><td></td><td>7</td><td>.</td><td>4</td><td>0</td><td></td><td></td><td></td><td></td><td></td><td></td><td></td><td></td><td></td><td></td><td></td></tr> <tr><td>O</td><td>R</td><td>P</td><td></td><td>8</td><td>0</td><td>3</td><td></td><td></td><td>P</td><td>S</td><td>U</td><td></td><td>3</td><td>2</td><td></td><td></td><td></td><td></td></tr> <tr><td>T</td><td>e</td><td>m</td><td>p</td><td></td><td>1</td><td>8</td><td></td><td></td><td></td><td></td><td></td><td></td><td></td><td></td><td></td><td></td><td></td><td></td></tr> </table>	C	H	L		8	.	9	7						n	A	9	1	5	6	p	H			7	.	4	0												O	R	P		8	0	3			P	S	U		3	2					T	e	m	p		1	8												
C	H	L		8	.	9	7						n	A	9	1	5	6																																																											
p	H			7	.	4	0																																																																						
O	R	P		8	0	3			P	S	U		3	2																																																															
T	e	m	p		1	8																																																																							

DPD Reading

Collect the water sample. Be sure to open the sample port long enough to obtain a representative sample. This may require many seconds depending on flowrate. Rinse both the container used to capture the sample and colorimeter cell with the sample water several times.



9. Add two 10-mL DPD Free Chlorine Reagent Powder Pillows or two 10-mL DPD Total Chlorine Reagent Powder Pillows to the second sample cell.



10. Close the sample cell. Invert the sample cell for about **20 seconds** to dissolve the reagent. Undissolved power will not affect accuracy. A pink color will show if chlorine is in the sample.



11. Clean the prepared sample cell.



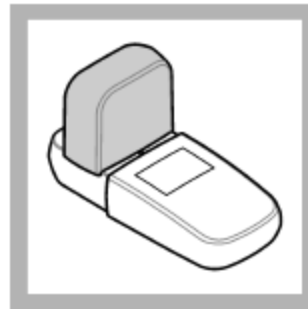
12. **Free chlorine measurement:** Within 1 minute of the reagent addition, insert the prepared sample into the cell holder. Point the triangle mark on the sample cell away from the keypad. Go to step 15.



13. Set and start a timer for 3 minutes. A 3-minute reaction time starts.



14. **Total chlorine measurement:** After 3 minutes and within 6 minutes of the reagent addition, insert the prepared sample into the cell holder. Point the triangle mark on the sample cell away from the keypad.



15. Install the instrument cap over the cell holder.



16. Push **READ**. Results show in mg/L chlorine (Cl_2).

Note: After calibration, a new value will display on the next cycle, ~1 minute.

6.2 DILUTION PROCEDURE (SYSTEMS THAT USE MORE THAN 10 PPM TRO FOR BALLASTING)

- Follow Step 1 above to fill cuvette with sample.
- Fill a second vial with water without TRO (Deionized water is OK) twice.
- Pour both cuvette into the supplied 50 mL bottle and mix by inverting.
- Resume testing in Step 1 above.
- Multiply the result by 3 for TRO level.

7 CALIBRATE CHLORINE ZERO (USUALLY UNNECESSARY)

MENU | Calibrate | CHL Menu | Chl Zero

Press SELECT for each Menu Option

The cursor will move to “Done” and the chlorine zero has been set.
Be certain that there is no chlorine residual before performing this operation.

8 TROUBLESHOOTING

Display “ADDR None Searching”

This indicates that the display is not communicating with the sensor module.

- Check the connection and wiring to the Sensor Module for loose or swapped connections.
- After correcting the problem, power the display off and back on.
- Check the sensor to see if the motor is working.
 - If not, power and ground lines may be wired backwards. Check and correct.
- There could be a short in the wiring to the sensor.
- Check all four wires resistance to ground (sensor housing) with an Ohm Meter.
 - There could be an internal short from the wires to the sensor from the time the valve adapter was added. Resistance should be open (infinite resistance).
 - If the motor is working, the com lines may be reversed. Check and correct.
- If the sensor still does not communicate, then replace it with a new sensor.

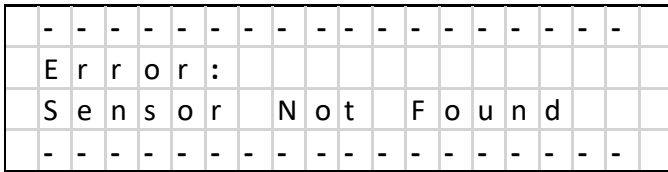


Figure 8: Screen indicates no communication with sensor- no sensor address found

8.1 LEVEL ONE PROBLEM CODES AND ALARMS

If an error occurs with the sensor, it will be displayed in the lower right corner of the *Main Screen* (Figure).

Main Screen																		
C	H	L		0.	1	7							n	A	1	7	7	
p	H		7.	4	0				P	S	U			3	2			
O	R	P		8	0	3			C	N	D			4	8	1	0	0
T			1	8.	0		1	2	5					E	R	R	1	5

Figure 9: Error displayed on Main Screen

Level One Fault Codes (Firmware 3.31 and higher)			
These problems will still allow operation of the measurement module and will be cleared when the condition is removed or corrected.			
Error Code	Meaning	Cause	Corrective Action
1	Air in Sensor	Possible air in sensor, open wire connection, or bad sensor.	Power on and off to prime sensor. Check installation to ensure outlet port is vertical or perpendicular to flow. Check orientation: should be mounted 90° to 270°. If problem persists for five resets, replace sensor with exchange unit.

31	Air in Sensor	Air in sensor. The sensor will enter a priming function and try to remove the air. Error will clear automatically when condition is corrected.	Power on and off several times. Make sure sensor is immersed in water. Check Sensor orientation.
34	Motor Stalled	Debris in sensor cover.	Check for debris in sensor cover. See Section 18 for sensor disassembly.
35	Motor RPM very Low	Debris in sensor or corroded impeller or worn bearings (error code only present in firmware versions earlier than 396).	Check for debris in sensor cover. See Section 18 for sensor disassembly. Replace impeller and bearings if worn or corroded.
87	Bad temp Cal	Temperature Cal out of range or too low to calibrate	Replace sensor with exchange unit.
13	Zero calibration out of range	Zero calibration out of range.	Reset zero calibration to zero.

8.2 LEVEL THREE ALARM CODES OUTSIDE MEASUREMENT RANGE

These errors will cause the Display to flash the backlight and the 4-20 mA output to go negative (<4 mA output). These conditions are outside of the Sensor's operating parameters indicating the displayed results may not be accurate.

Outside Measurement Range Alarms (Firmware v490 and higher Display v199 and higher)			
These problems will still allow operation of the Sensor and will be cleared when the condition is removed or corrected.			
Error Code	Meaning	Cause	Corrective Action
36	Chlorine level exceeds measuring range >30 ppm	Process chlorine level to high may be inaccurate.	Check process. Replace sensor if TRO level is not accurate.
37	pH low <5	Verify pH with handheld meter.	If sensor is not accurate, replace the pH sensor.
38	pH high >10	Verify pH with handheld meter.	If sensor is not accurate, replace the pH sensor.
39	Conductivity high >65,000 μ S	Check sensor operation.	Verify conductivity level and replace sensor with exchange unit if necessary.
40	Temperature high >42°C	Check accuracy of measurement.	If temperature is accurate, reduce process temperature.

8.3 PH RELATED ERROR CODES (IF PH IS PRESENT SWN-PH-HT2)

15	pH reading out of range	pH sensor bad. System set with pH option but no pH installed.	Replace pH sensor Turn off pH measurement option.
16	Bad offset	pH zero not in manufacturer specified range.	Replace pH sensor.
17	Bad pH slope	pH slope not in manufacturer specified range.	Replace pH sensor.

8.4 LEVEL TWO PROBLEM CODES

These types of faults, detected by the system, stop the cycle pending removal or correction of the condition.

These errors will generate an alarm condition that will cause the Display to flash the backlight and the 4-20 mA output to go negative (<4 mA output).

Level Two Error Codes			
These problem codes will stop the cycling of the measurement module until corrected.			
Error Code	Message	Cause	Corrective Action
10	Sensor communication problem	Sensor not responding or missing, no communications with the temperature sensor board.	Check sensor connections. Replace sensor with exchange unit.

8.5 DIAGNOSTICS

Beginning with version 2.08 of the Display Firmware, the following simplified procedure will bring up important operation information. For Technical Support, please take a photo of this screen. To display this screen, press the DOWN Arrow button ↓ from the main display. This will bring up the screen below:

Down Arrow From Main Screen											
N a	1	1	4	4		A U X	1	1	5	7	m V
C L Z	0				C L S	1	0	0	0		
M S	2	2	0	8	P H Z	1	0	0	P H S	-	4 5 0
V M	6	9	9		D 2 2 7	E R R	0.	0.			

Below is a description of what each of the values refers to. This will be useful for technical support.

Legend for display locations		
Sensor Current		Aux Voltage
Chlorine zero calibration value		Chlorine slope calibration value
Motor Speed	pH Zero calibration value	pH Slope calibration value
Version Sensor	Version Display	Last Errors

To Check Sensor Readings

To check the sensor measurement readings follow the key press sequence below to see the measurement values of a reading. This is also useful for technical support and is used with Display Firmware versions 2.07 and lower.

MENU | Diagnostics | Monitor | Meas Readings

1	6	2	4	N a		A U X	1	1	5	7	m V		
I	2	V	2	5	0	M T R	2	0	9	3			
A	D	1	0	2	7	0		F L T	0	0	0	0	0
V	e	r	M	3	0	1	V	e	r	D	1	7	7

Motor Speed

Last Error Codes

Figure 10: Measure Readings Screen

VMXXX = Sensor Firmware Version (3.01)

DXXX = Display Firmware Version (1.77)

9 OUTPUT CONFIGURATION OPTIONS

4-20 mA Output 2 can be configured for either PSU (default), pH, or ORP. See screens below to select it. The bottom line of the display indicates which output is selected.

9.1 TWO OUTPUT CONFIGURATION

	M	e	a	u	r	e	m	e	n	t	O	p	t	i	o	n	s		
>	4	-	2	0	M	A	O	p	t	i	o	n	s						
	M	o	d	b	u	s													

Figure 91 Select Output2 Type

Set 4-20 mA Output 2 Channel																			
	S	e	l	e	c	t	P	S	U										
	S	e	l	e	c	t	P	H											
	S	e	l	e	c	t	O	R	P										
>	S	e	l	e	c	t	C	N	D	O	U	T	2	=	C	N	D		

Figure 102: Options available for Output 2 Channel

Set 4-20 mA																																			
	4	-	2	0	M	A	C	H	L									1	0	.	0														
	4	-	2	0	M	A	P	S	U												5	0	.	0											
	4	-	2	0	M	A	T	E	M	P														5	0	.	0								
	4	-	2	0	M	A	P	H																			1	2	.	0					
	4	-	2	0	M	A	O	R	P																					2	0	0			
>	4	-	2	0	M	A	C	O	N	D																					6	5	0	0	0

Figure 113: When setting output to from PSU to Cond, the label will not change to Cond even the 4-20 will be set for this output. Be sure to adjust the high level to max conductivity level.

Scroll down to reach the ORP and CND lines. Adjust CND to 65000.

Set 4-20 mA 4 Channel																																					
	4	-	2	0	M	A	O	R	P																						2	0	0				
>	4	-	2	0	M	A	C	N	D																								6	5	0	0	0

9.2 4 OUTPUT CONFIGURATION

pH Output (4 Output Display)

pH 4-20 mA output can be configured for different output options. Some common examples are:

1. pH 5 to 12 (default)
2. pH 0 to 14

Offset is set to the lower pH limit. For case 1 it will be set to 5. Case 2 will be 0.

4-20 mA Range is set to upper limit minus the Offset. Case 1 will be $12 - 5 = 7$. Case 2 will be $14 - 0 = 14$

Temperature Output (Change to °F)

- The 4-20 mA Output for Temperature can be configured from °C to °F on the 4-20 mA Output. To change the display see Measurement Options menu and make this change there. The two settings are independent of each other.
- Then configure the 4-20 mA output as follows:
 - OFFSET is the minimum temperature for the 4-20 mA output span
 - RANGE is the span less the OFFSET

Example: Set 4-20 mA Span from 32°F to 122°F

1. Set Disp Temp to F

Configuration with 4-20 mA Outputs																
S	E	T	4	-	2	0	M	A	R	A	N	G	E			
S	e	l	e	c	t		O	u	t	2	T	y	p			
S	e	t	4	-	2	0	O	f	s	e	t					
D	i	s	p	T	e	m	p	F					Y	E	S	

2. Set OFFSET or minimum temperature of 32°F will be OFFSET 032

Set 4-20 mA Offset (°F = YES)																
4	-	2	0	M	A	T	E	M	P				0	3	2	
4	-	2	0	M	A	P	H						5	.	0	

Figure 124: Temperature Offset to °F

3. Set Range to (122-32 =90) 090

Set 4-20 mA 4 Channel																
4	-	2	0	M	A	C	H	L					1	0	.	0
4	-	2	0	M	A	P	S	U					5	0	.	0
>	4	-	2	0	M	A	T	E	M	P			9	0	.	0
4	-	2	0	M	A	P	H						7	.	0	

Figure 135: change Temperature range

Example: Set 4-20 mA Span from 0°C to 40°C

1. Set Disp Temp to C (select Down to No)

Configuration with 4-20 mA Outputs																
S	E	T	4	-	2	0	M	A	R	A	N	G	E			
S	e	l	e	c	t		O	u	t	2	T	y	p			
S	e	t	4	-	2	0	O	f	s	e	t					
D	i	s	p	T	e	m	p	F					N	O		

Figure 146: Set to Output °C

2. Set OFFSET or minimum temperature of 0°C will be OFFSET 00.0

Set 4-20 mA Offset (°F = NO)

4	-	2	0	M A	T E M P	-	0	0	.	0		
4	-	2	0	M A	P H					5	.	0

Figure 157: Temperature Offset to °F

3. Set Range to (40-0 =40) 040

Set 4-20 mA 4 Channel Range

4	-	2	0	M A	C H L					1	0	.	0
4	-	2	0	M A	P S U					5	0	.	0
>	4	-	2	0	M A	T E M P				4	0	.	0
4	-	2	0	M A	P H					7	.	0	

Figure 168: Set Range for temperature to 40°C

9.3 4-20 mA CALIBRATION

*Only applicable to 4 channel 4-20 mA output displays.

Navigate to the 4-20 mA Calibration Menu:

Menu | Calibration | 4-20

Utilize the below menu screen to calibrate 4-20 mA outputs:

4-20 Calibration Menu																
>	4	-	2	0	o	u	t						2			
	S	e	t		o	u	t	=	4	m	A					
	A	d	j		4	m	a	D	A	C		4	.	0	0	
	A	d	j		2	0	m	a	D	A	C	2	0	.	0	0

1. Select output to calibrate (2, 3, or 4) using the up and down arrows.
2. Connect an ammeter to output leads to read the live current of the output to be calibrated.
3. Set display output to 4 mA by hitting select on **Set out =** until it reads **4mA**.
 - a. The display will start sending the 4-mA signal after selection.
4. Select **Adj 4 ma DAC**. Value will be 4.00 prior to calibration.
5. Adjust value up or down to calibrate value to the ammeter measurement.
6. After adjusting value, press **Select** to store the calibration value.
7. Scroll up to **Set Out** and press **Select** to set display output to 20 mA.
 - a. The display will start sending the 20-mA signal after selection.
8. Select **Adj 20 mA DAC**. Value will be 20.00 prior to calibration.

4-20 Calibration Menu																
	4	-	2	0	o	u	t						2			
>	S	e	t		o	u	t	=	2	0	m	A				
	A	d	j		4	m	a	D	A	C		3	.	9	7	
	A	d	j		2	0	m	a	D	A	C	2	0	.	0	0

9. Adjust value up or down to calibrate value to the ammeter measurement.

10. After adjusting value, press **Select** to store the calibration value.
11. If calibrating multiple outputs, start from step 1 and select a different output channel.
12. Exiting the 4-20 menu will save calibrations and revert to normal 4-20mA output measurement options.

10 CHANGE MEASUREMENT OPTIONS

MENU | Configuration | Measurement Options

Configuration																
>	M	e	a	r	e	m	e	n	t	O	p	t	i	o	n	s
	4	-	2	0	M	A	R	a	n	g	e					
	M	o	d	b	u	s										

Figure 19: Measurement Options

pH and ORP can be turned off. Warning: pH should not be turned off if a pH sensor is present. This is only used with SWN-P models (that do not have a pH sensor is present). To stop pH from displaying on main screen disable Dsp pH (no X).

The display of Conductivity, PSU and pH can be turned off. Turn off CND to display PSU. Deg F enables °F Temperature unit display.

Options														
D	o	p	H				X	D	s	p	C	N	D	X
D	o	O	R	P			X	D	s	p	P	S	U	X
D	s	p	p	H			X	D	e	g	F			X
D	s	p	O	R	P		X	D	o		P	S		X

Options Page 2 (without Long Menu Active)														
D	s	p	.	0	1	X		N	/	A				
E	O	C	H	I	d	-		N	/	A				
N	/	A						N	/	A				
N	/	A						N	/	A				

Figure 20: Select item to enable or disable

To enable 0.00 precision on the chlorine reading (0.01), scroll down to the Dsp .01 and put an X next to this measurement.

If Conductivity is enabled, PSU will not display on Main Screen, only the conductivity value.

Main Screen											
C H L	0.	1 7					n A	1 7 7			
p H	7.	4 0									
O R P	8 0 3					P S U	0				
T	1 8	1 2 5									

Figure 21: Display with PSU enabled and CND disabled

11 CHECKING THE LOG FILE

If errors are encountered during operation, it is sometimes useful to view the log file entries. Log file entries are not timestamped but are recorded continuously in a loop. There is a maximum of 65,000 entries. The last log entries appear first. To view the logs press MENU | Diagnostics | Log | View Last Log.

Log File											
M o n i t o r											
> L o g											

Log File											
> V i e w L a s t L o g											
E r a s e L o g s											
T o t a l L o g s	2 5 6 2 7										

A sample log entry is shown below: See the table for detail of what each item means.

Log File											
L o g	1 9 5			C H L	5 . 0 0						
p H	7 . 8 5		n A	2 3 0 4 0							
C N D	4 5 0 0 0		T	1 9 8		O R P	6 5 0				
E r r	0 0	A U X	1 1 9 8		M T	2 2 0 8					

Log File Entry Meanings		
Log	The number of the log being displayed.	
CHL	The chlorine level displayed.	
pH	pH reading.	This is generally not displayed unless enabled in the firmware.
nA	The current (signal) for the chlorine reading.	
CND	Conductivity.	Can be converted to PSU.

T	Temperature reading (decimal not shown).	
ORP	Oxidation Reduction Potential (if enabled in Configuration).	
Err	Error Code.	See Troubleshooting section.
AUX	Indicates if air is present.	Values about 2100 are usually due to air. Can also indicate a chlorine sensor problem.
Mt	Motor speed.	If intermittently zero could indicate air.

12 RESTORE DEFAULT CALIBRATIONS

If the sensor settings and calibrations have been changed and the sensor is not measuring correctly or has persistent error codes that cannot be resolved, then restoring the default calibrations may resolve the issue.

****Note:** If you restore calibration to defaults, you will need to re-calibrate the sensor for chlorine and/or pH.

With the Long Menu active (Section 14) navigate:

MENU | Diagnostics | Calibration/Default | Set to Defaults | Cals to default

Diagnostics																			
	M	o	n	i	t	o	r												
>	C	a	l	i	b	r	a	t	i	o	n	/	D	e	f	a	u	l	t
	L	o	g																

Calibration/Defaults																			
	S	e	t		P	H	/	C	H	L	/	C	O	N	D				
>	S	e	t		t	o		D	e	f	a	u	l	t	s				

Set to Defaults																			
>	C	a	l	s		t	o		d	e	f	a	u	l	t				

Figure 22: Restoring default calibrations.

13 CHANGING MODBUS OPTIONS

MENU | Configuration | Modbus

These options can be used to reset the Modbus address of the sensor or identify which sensor the Display is connected to. At power up, the Display will search for all sensors on the bus.

Modbus Options																				
S	I	a	v	e	A	d	d	r	e	s	s							1	2	5
C	h	a	n	g	e	A	d	d	r									1	2	5
B	u	s	S	e	a	r	c	h										1	2	5
>	M	o	d	b	u	s	E	n	a	b	l	e	d					Y	e	s

Figure 175: Select the Modbus item

Select Modbus enabled to use the Display with a PLC or PC Program.

S	I	a	v	e	A	d	d	r	e	s	s							1	2	5
C	h	a	n	g	e	A	d	d	r									1	2	5
>	B	u	s	S	e	a	r	c	h									1	2	5

Figure 24: Bus search will find all available sensors on the bus

14 ADDITIONAL COMMANDS

14.1 LONG MENU

The Long Menu adds several options to the Menus. This provides insight into some of the internal calibration values that are useful for troubleshooting.

To enable the Long Menu: Press the → and SELECT Key for at least 2 Seconds. You will see a notice that the Long Menu is Now Active. This will remain until the Display is powered off and on.

-	-	-	-	-	-	-	-	-	-	-	-	-	-	-	-	-	-	-	-	-	
L	o	n	g	M	e	n	u	S	e	l	e	c	t	e	d						
-	-	-	-	-	-	-	-	-	-	-	-	-	-	-	-	-	-	-	-	-	

Figure 25: Long menu notification (2 seconds)

Main Screen																			
C	H	L		8	.	9	7			n	A			9	5	6	5		
p	H			7	.	4	0												
O	R	P		8	0	3				P	S	U		3	2				L
T	e	m	p		1	8													

Figure 26: Long menu enabled with L Indicator

Diagnostics																			
M	o	n	i	t	o	r													
>	C	a	l	i	b	r	a	t	i	o	n	/	D	e	f	a	u	l	t
L	o	g																	

Additional Long Menu Enabled

This Menu selection is used to individually view and adjust individual slope and zero for three measurements: Chlorine, pH, and Conductivity. The screens are shown below.

>	S	e	t	P	H	/	C	H	L	/	C	O	N	D						
	S	e	t	t	o	D	e	f	a	u	l	t								

>	C	H	L	Z	e	r	o	&	S	l	o	p	e								
	C	o	n	d	u	c	t	i	v	i	t	y									
	p	H	Z	e	r	o	&	S	l	o	p	e									

>	C	H	L	Z	e	r	o							0	0	0	0			
	C	H	L	S	l	o	p	e						0	0	0	0	0	0	
	C	H	L	.	1	4	2	8	2	n	A									

>	p	H	Z	e	r	o								0	0	3	0			
	p	H	S	l	o	p	e							-	0	5	5	4		
	Z		1	6	3	.	1	4		p	H	7	.	8	9					
	S		-	5	0	.	6	3		m	v									

>	C	o	n	d	Z	e	r	o						0	0	0	0				
	C	o	n	d	u	c	t	i	v	i	t	y			0	0	0	0			
	M	a	x	0	D	l	y	0													
	R	A	W	0	X	0	h	i	0												

14.2 CALIBRATION KEY CODE

Note: A Key Code can be activated to restrict access to calibration settings. To activate the key code, navigate:

Menu | Measurement Options | Key Cde

The Key Code option will be located just below the EOC Hold option on the second measurement options screen. Once activated, a code will be required to access the Calibration Menu.

When you select a Calibration Option, the following screen will appear. You will need to get the Key Code from your supervisor or have a qualified person perform the calibration operation. The Key Code consist of a series of keys pressed in order.

16 MAINTENANCE COMPONENTS FOR THE SWN-P-HT2

Table 1: Part Numbers for replacement

Quantity	PN	Description
1	RP-HT2	Replacement Wear Kit (includes the below items)
1		Sensor cover
1		Impeller
15		Cleaning balls

Maintenance SWN-P-HT2	Frequency
Calibration Chlorine	Check every 6 months and recalibrate if level differs more than 20% from DPD reading
Replace Wear Parts	Every 24 months
Sensor Exchange- Replace motor assembly	Every 60 months

17 BIANNUAL MAINTENANCE (SWN-P+/SWN-P-HT2+)

1. Disconnect power from the sensor.
2. Make sure the ballast water system is shut down.
3. Isolate the sensor by closing all valves adjacent to the sensor.
4. Drain water from the ballast pipe section with the sensor.
5. Loosen the threaded retainer nut (Figure 18).
6. Remove sensor slowly to limit of lanyard assembly ***DANGER*** If sensor is removed without closing the valve, flooding can result.
7. Close the Hot Tap Valve.
8. Disconnect lanyard hooks from valve brackets.
9. Remove the sensor assembly from the valve.

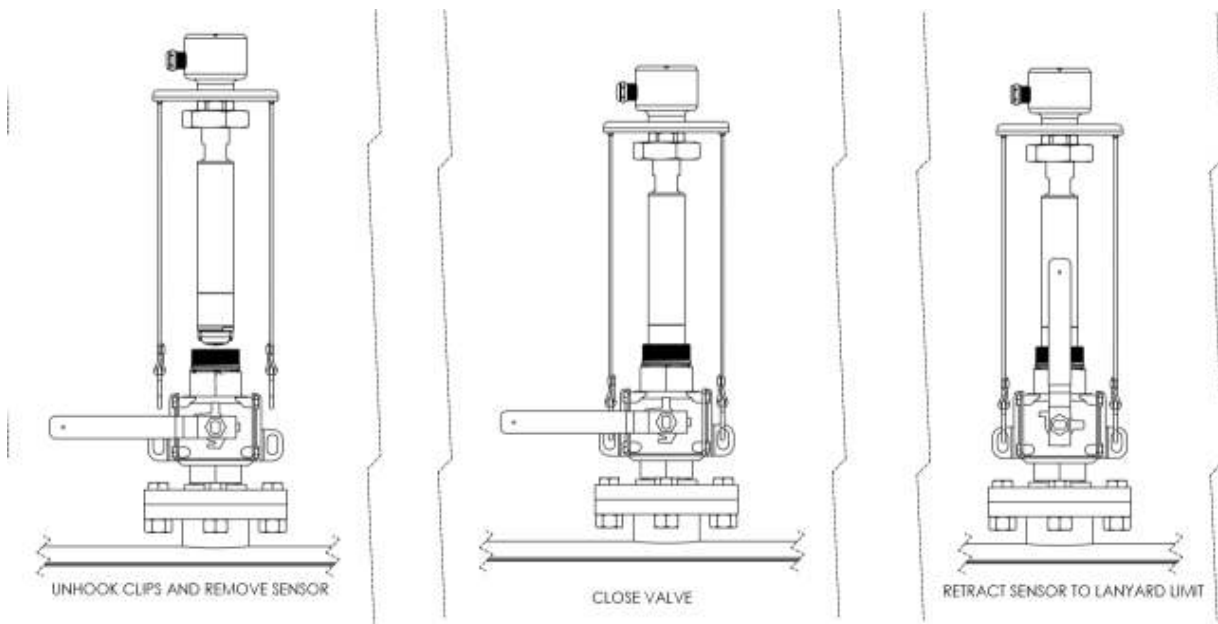




Figure 18: Remove sensor from Hot Tap Valve (Sequence Right to Left for removal)

	CAUTION
	Close all isolation valves before sensor removal.
	CAUTION
	Drain water from ballast pipe before sensor removal.

18 ANNUAL PH CALIBRATION CHECK

Calibration												
>	C	H	L									
	C	O	N	D								
>	p	H										
	4	-	2	0								

Calibrate pH												
>	K	n	o	w	n	V	a	l	u	e		
	B	u	f	f	e	r	C	a	l			
	p	H	R	e	s	e	t	D	e	f	a	u

19 BIENNIAL REPLACEMENT OF WEAR PARTS ALL EXCEPT EX-P-HT4

Tools Needed (not provided):

- Screwdriver (+) #2

Parts Kits Contents

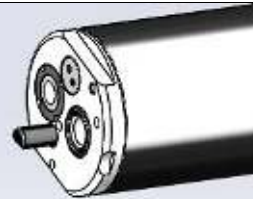
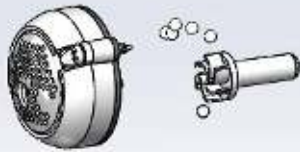
- Parts Kit C (contains Sensor Cover Assembly, screws, Cleaning Beads)
- Parts Kit A (large pin impeller, large pin bearing). Only A or C is used, not both.



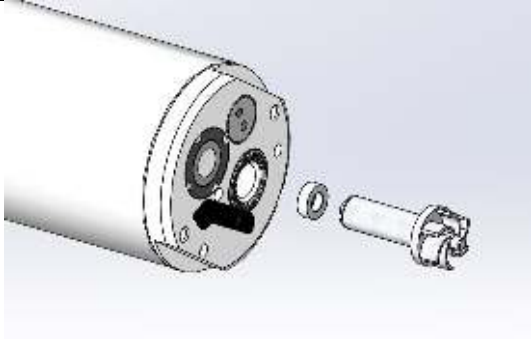
Step 1: Remove the screws holding the Sensor Cover and strainer on to the sensor end.



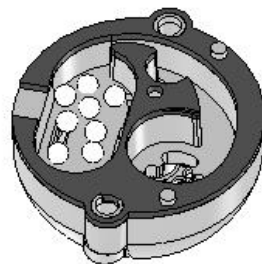
Step 2: Before separating the Sensor Cover from the sensor end, position the sensor vertically, with the wet side facing down, to prevent the balls from escaping. Pull down without twisting.



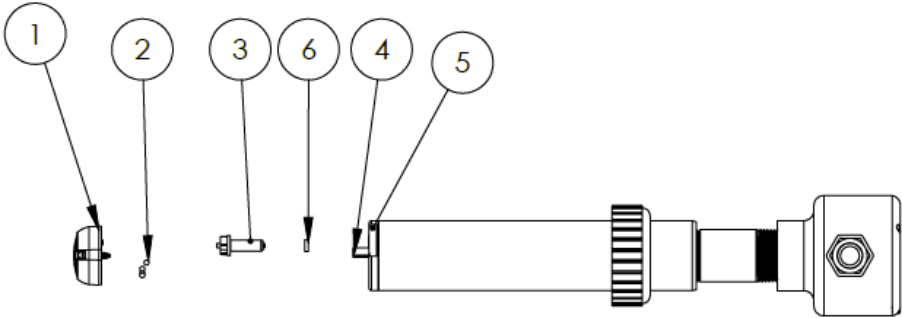
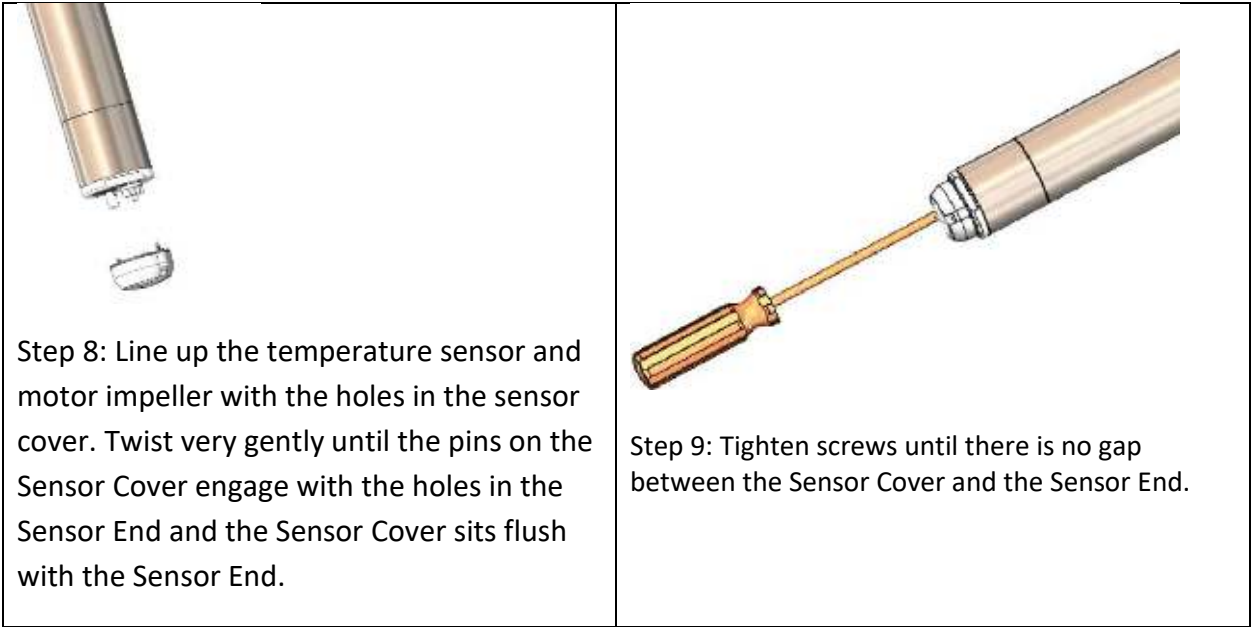
Step 3: Remove the sensor cover assembly, impeller and cleaning beads. Note which impeller was installed (Large Pin or Small Pin). Then discard those parts. If the impeller has a small pin, then proceed to Step 4. For large pin impeller, skip ahead to Step 6 since the large pin bearing does not require replacement.



Step 6: Install new impeller and bearing for small pin impeller. For large pin impeller, replace only the impeller.



Step 7: Place the cleaning balls in the larger cavity of the new Sensor Cover as shown above. Make sure no balls are in the other (impeller) cavity.



Item No.	Description
1	Sensor Cover Assm
2	Cleaning Beads
3	Impeller
4	Lower Bearing
5	Temperature Sensor
6	Sensor End

Figure 19: Wear Part Exploded Diagram

22 LIMITED WARRANTY

Halogen Systems warrants its products against material workmanship defects for a period of one year from the date of shipment.

In the event that a defect is discovered during the warranty period, Halogen Systems agrees, at its option, to repair or replace the defective product. Any product repaired or replaced under this warranty will be warranted only for the remainder of the original product warranty period.

Products may not be returned without authorization from Halogen Systems. To obtain authorization, please call Halogen Systems for a return material authorization number.

Limitations:

This warranty does not cover:

- 1) Damage caused by misuse, neglect (lack of appropriate maintenance), alteration, accident, or improper application or installation.
- 2) Damage caused by any repair or attempted repair not authorized by Halogen Systems.
- 3) Any product not used in accordance with the instructions furnished by Halogen Systems.
- 4) Damage caused by acts of God, natural disaster, acts of war (declared or undeclared), acts of terrorism, work actions, or acts of any governmental jurisdiction.
- 5) Freight charges to return merchandise to Halogen Systems.
- 6) Travel fees associated with on-site warranty repair.

This warranty is the sole expressed warranty made by Halogen Systems in connection with its product. All other warranties, whether expresses or implied, including without limitation, the warranties of merchantability and fitness for a particular purpose, are expressly disclaimed.

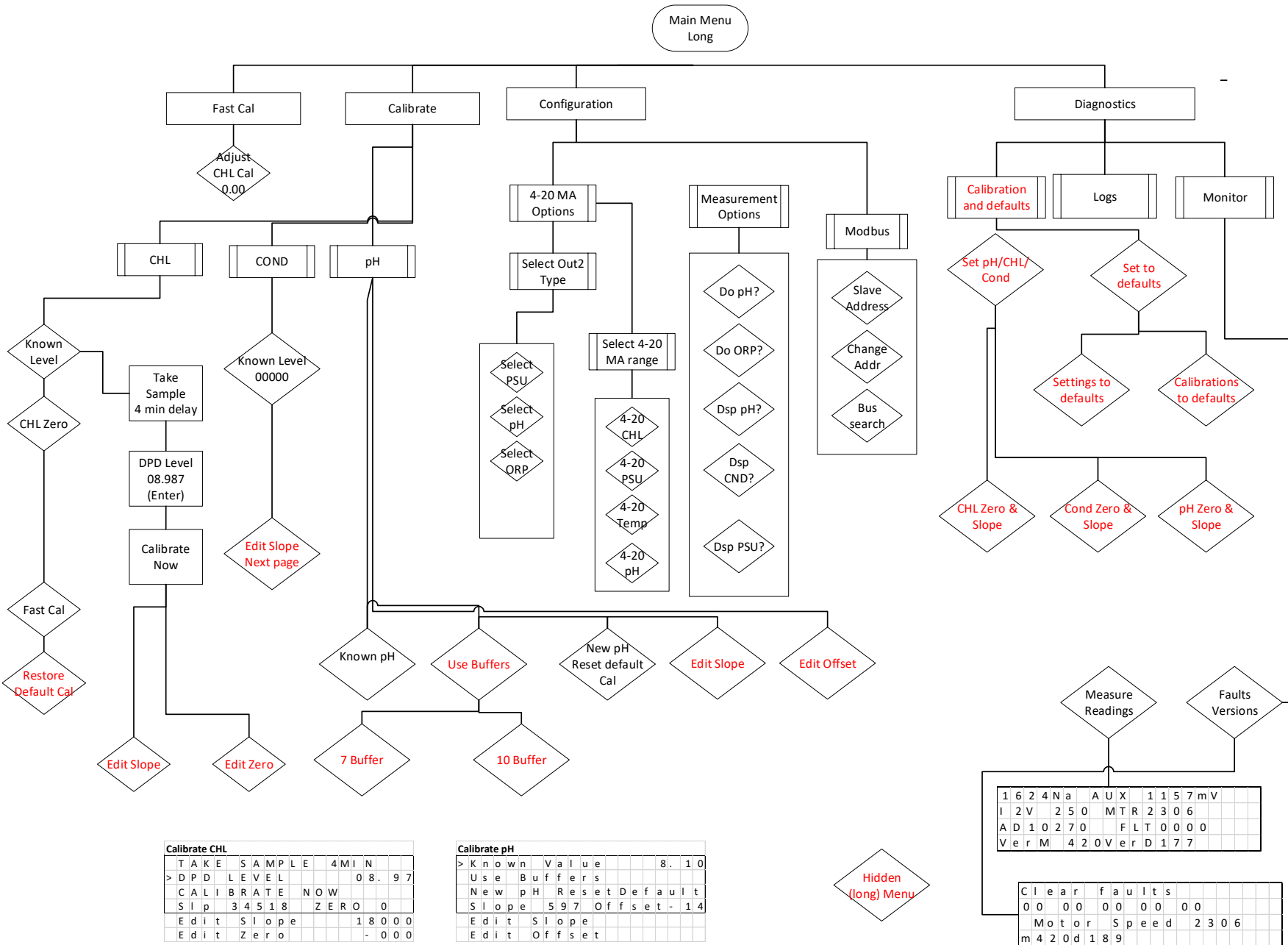
The liability of Halogen Systems shall be limited to the cost of the item giving rise to the claim. In no event shall Halogen Systems be liable for incidental or consequential damages.

This warranty is the sole and complete warranty for Halogen Systems. No person is authorized to make any warranties or representations on behalf of Halogen Systems.

Halogen Systems reserves the right to change or modify this warranty at any time.

23 REVISION HISTORY

DOCUMENT Version	REVISION DATE	REVISION DESCRIPTION
OM01-4.0	6/30/2020	Initial Release
OM01-4.1	12/30/2020	Change DPD Instruction to Lovibond MD100 from Hach colorimeter
OM01-4.2	3/6/2021	Struck calibration limit below 2 ppm Changed specification to 0 (non-freezing) to 40°C. (from 35°C)
OM01-4.2.2	5/7/21	Changed salinity to 0.2 to 38 PSU (from 34) Change Chlorine range from 0- to 10 ppm to 0 to 20 ppm and add DoC. Changed procedure to use DPD1 and DPD3.
OM01-4.2.3	9/15/21	Added menu option to enable 0.00 resolution for chlorine level



To enable the Long Menu: Press the **➔** and **SELECT** Key for at least 2 Seconds. You will see a notice that the Long Menu is Now Active. This will remain until the Display is powered off and on.